



Company : Beach Petroleum Ltd

Well : Fermat-1

Interval : 71.00 - 3584.04 meters

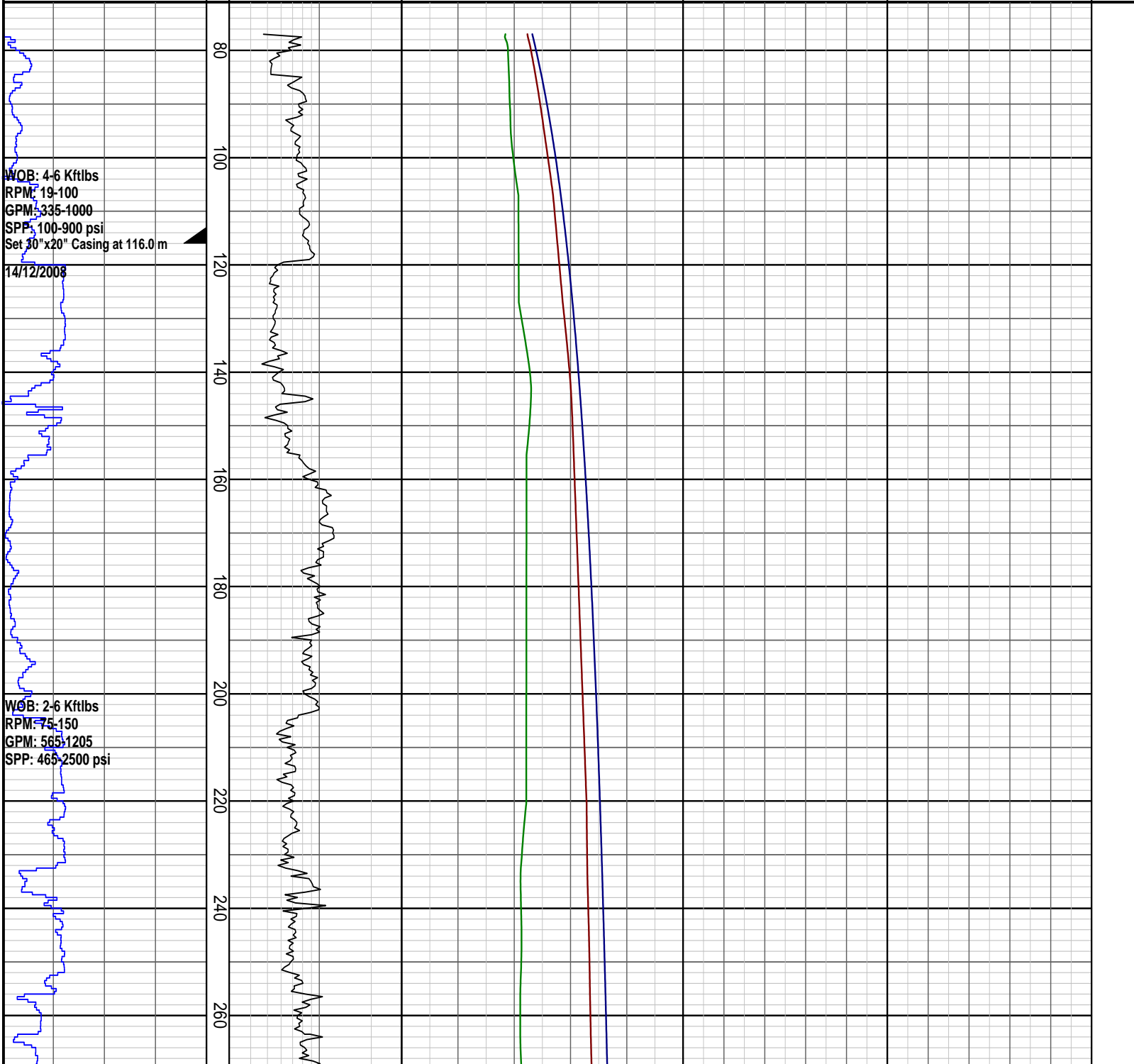
Created : 06/Jan/2009 8:36:23 PM

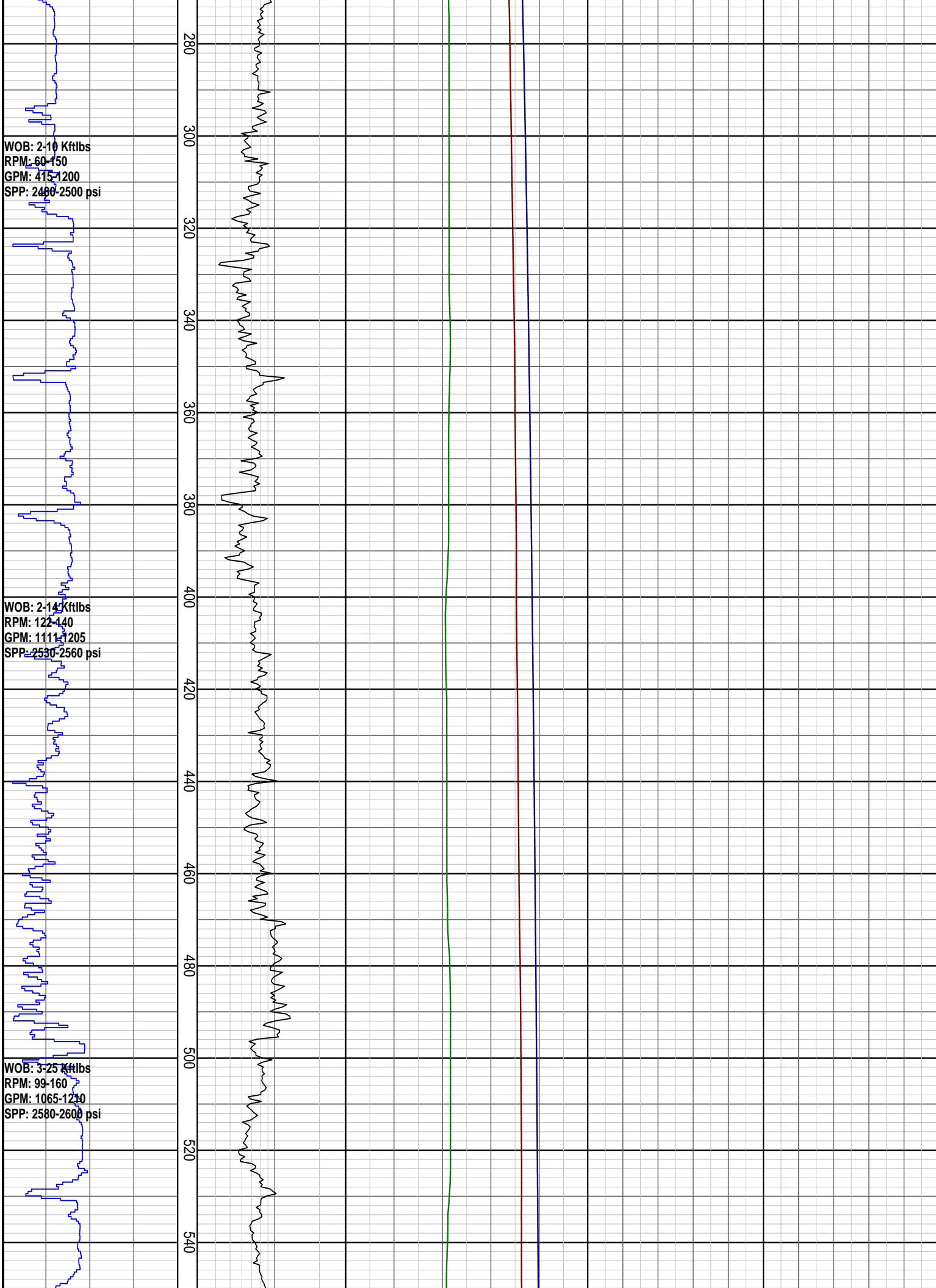


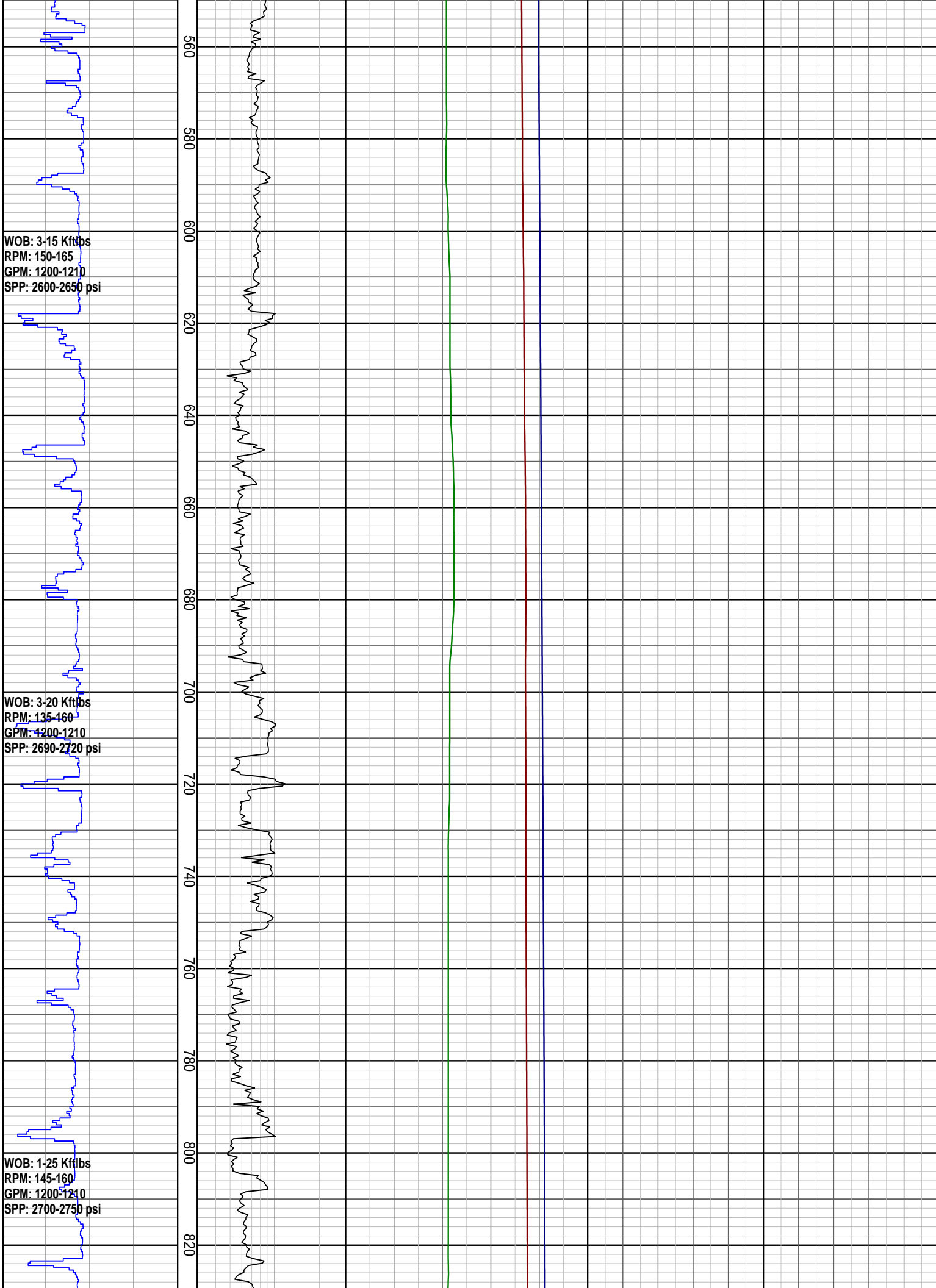
INTEQ

### PRESSURE DATA PLOT

Rate of Penetration ROP	DRILLING EXPONENT DXC	PRESSURE DATA Pore Pressure	TEMPERATURE Temperature Out	GAS Total Gas	INTERPRETED LITHOLOGY
50   100   150   200 m/hr	0.3   3	4   8   12   16   20 ppg	20   40   60   80   100 degC	50   100   150   200   250 unit	
		Fracture Pressure 4   8   12   16   20 ppg			
		Overburden Gradient 4   8   12   16   20 ppg			







WOB: 3-15 Kftlbs  
RPM: 150-165  
GPM: 1200-1210  
SPP: 2600-2650 psi

WOB: 3-20 Kftlbs  
RPM: 135-160  
GPM: 1200-1210  
SPP: 2690-2720 psi

WOB: 1-25 Kftlbs  
RPM: 145-160  
GPM: 1200-1210  
SPP: 2700-2750 psi

16/12/2008

WOB: 4-25 Kftlbs  
RPM: 120-155  
GPM: 1200-1210  
SPP: 2780-2800 psi

WOB: 4-25 Kftlbs  
RPM: 105-155  
GPM: 1200-1210  
SPP: 2300-2800 psi  
Set 13 3/8" Casing at 987.0 m

19/12/2008

20/12/2008

WOB: 1-8 Kftlbs  
RPM: 20-177  
GPM: 290-1006

840  
860  
880  
900  
920  
940  
960  
980  
1000  
1020  
1040  
1060  
1080  
1100

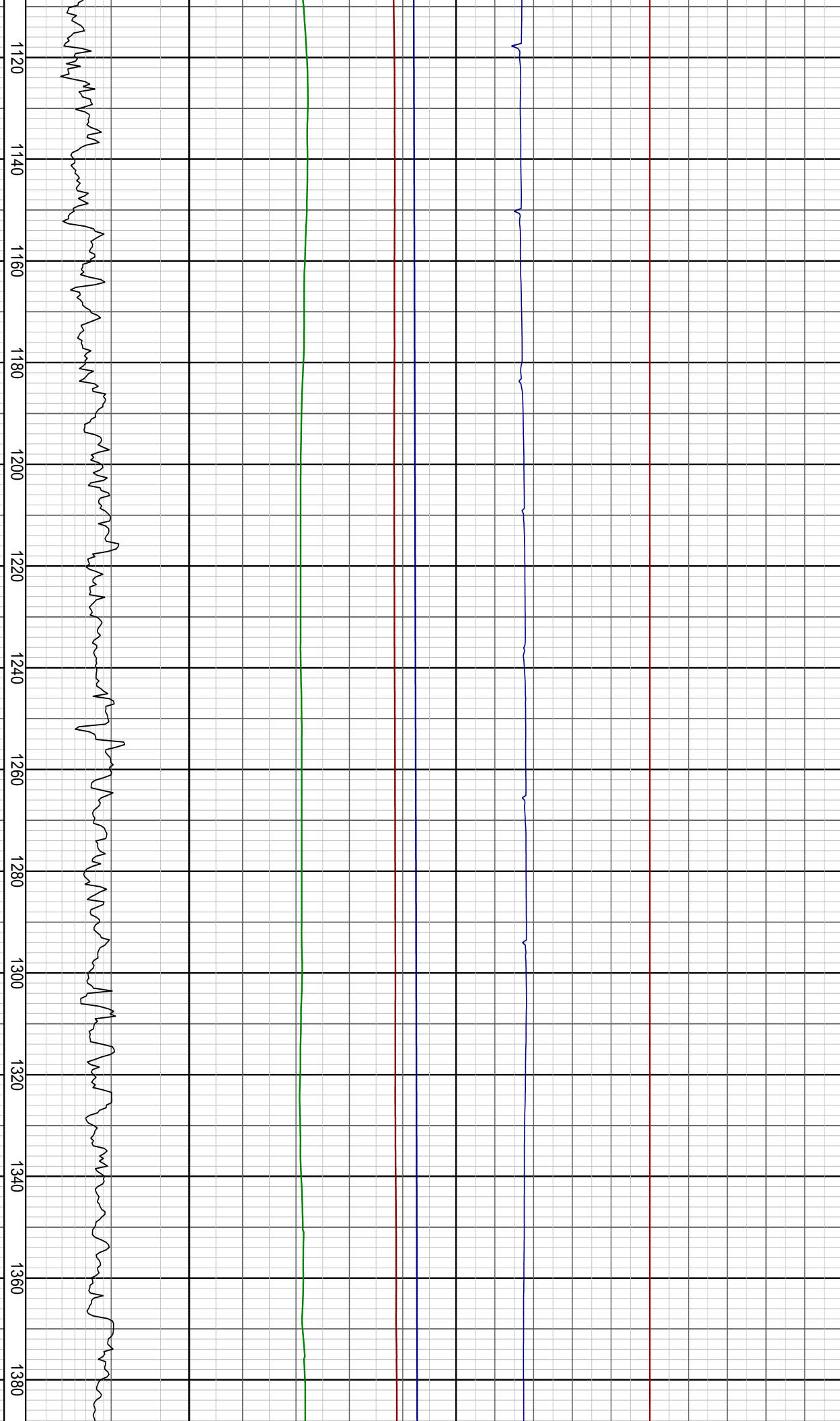
FIT @ 987.0 m with 9.3 ppg  
EMW: 15.0 ppg @ 960 psi



GPM: 230-1000  
SPP: 915-2045 psi

WOB: 1-14 Kftlbs  
RPM: 94-177  
GPM: 801-961  
SPP: 1249-1877 psi

WOB: 2-17 Kftlbs  
RPM: 80-130  
GPM: 801-903  
SPP: 1358-1724 psi



WOB: 4-18 Kftlbs  
RPM: 120-148  
GPM: 798-807  
SPP: 1445-1500 psi

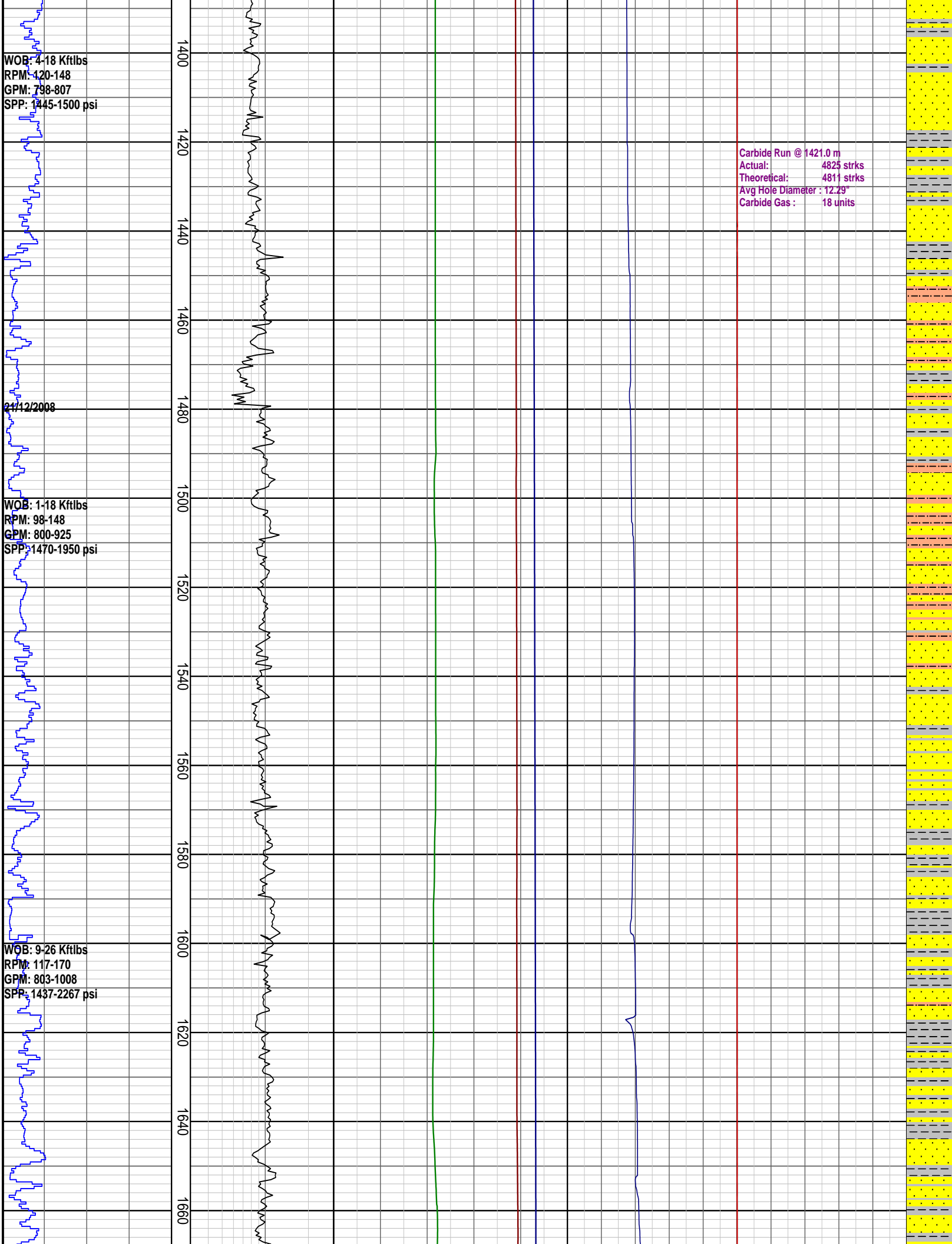
2/12/2008

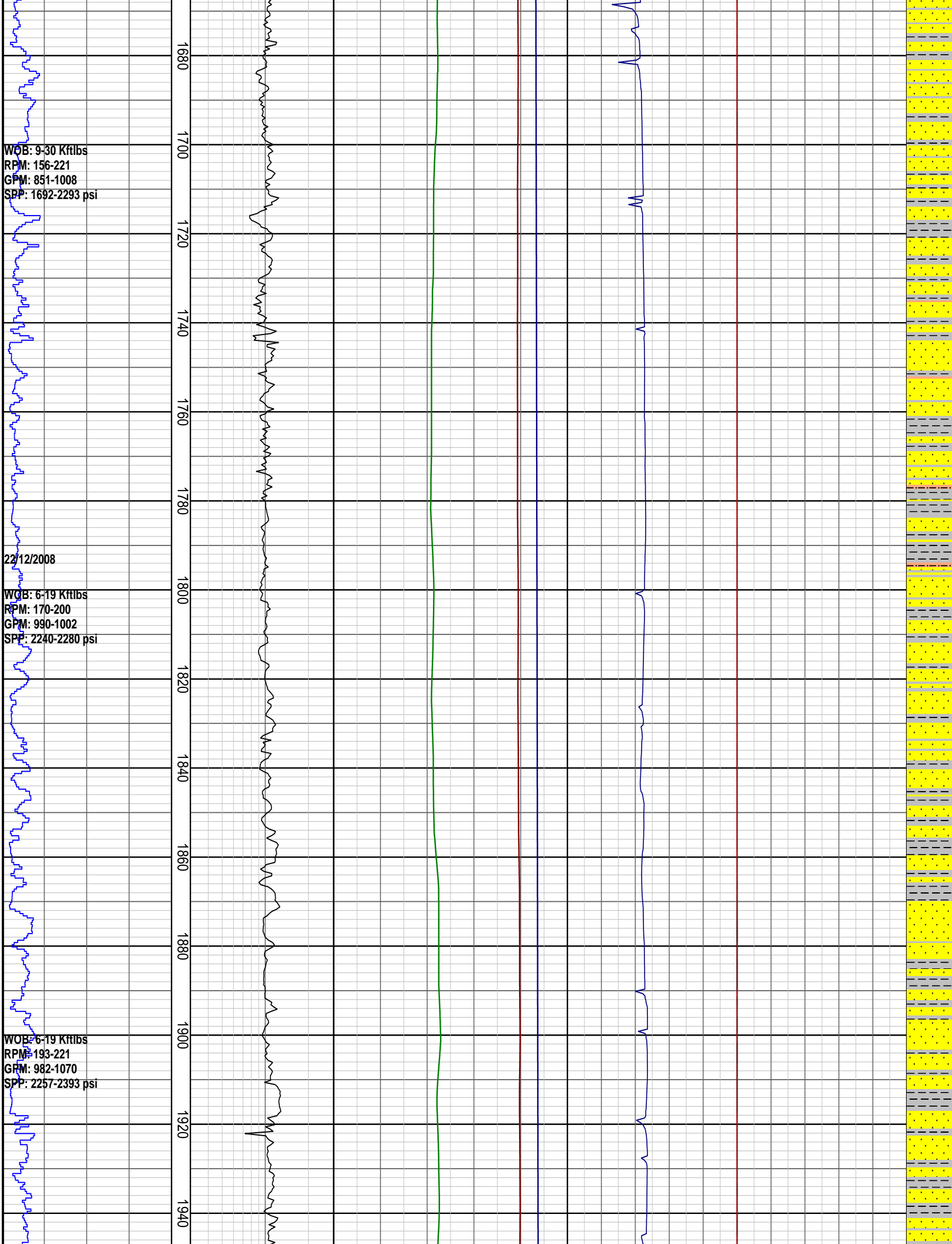
WOB: 1-18 Kftlbs  
RPM: 98-148  
GPM: 800-925  
SPP: 1470-1950 psi

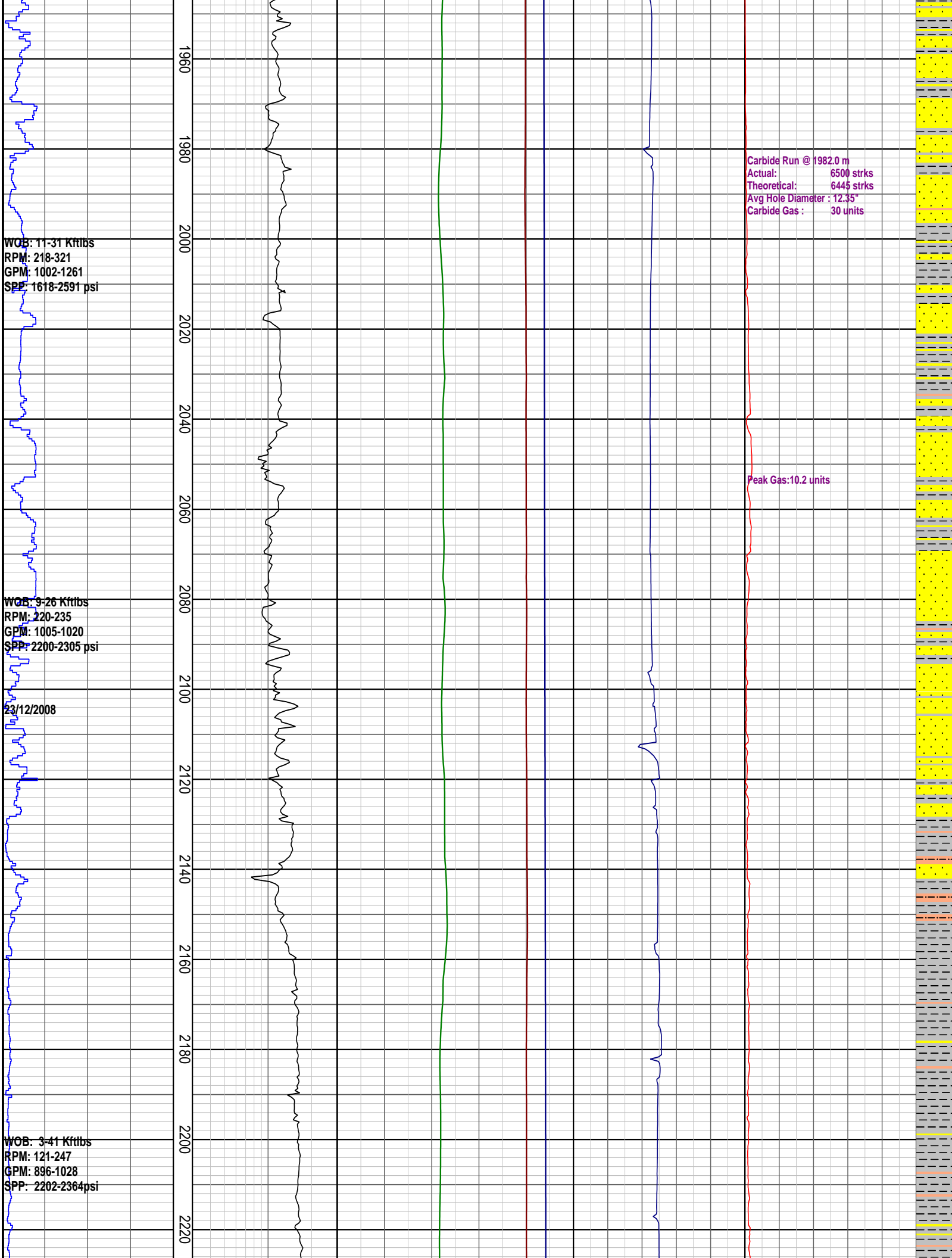
WOB: 9-26 Kftlbs  
RPM: 117-170  
GPM: 803-1008  
SPP: 1437-2267 psi

1400  
1420  
1440  
1460  
1480  
1500  
1520  
1540  
1560  
1580  
1600  
1620  
1640  
1660

Carbide Run @ 1421.0 m  
Actual: 4825 strks  
Theoretical: 4811 strks  
Avg Hole Diameter : 12.29"  
Carbide Gas : 18 units







WOB: 11-31 Kftlbs  
RPM: 218-321  
GPM: 1002-1261  
SPP: 1618-2591 psi

WOB: 9-26 Kftlbs  
RPM: 220-235  
GPM: 1005-1020  
SPP: 2200-2305 psi

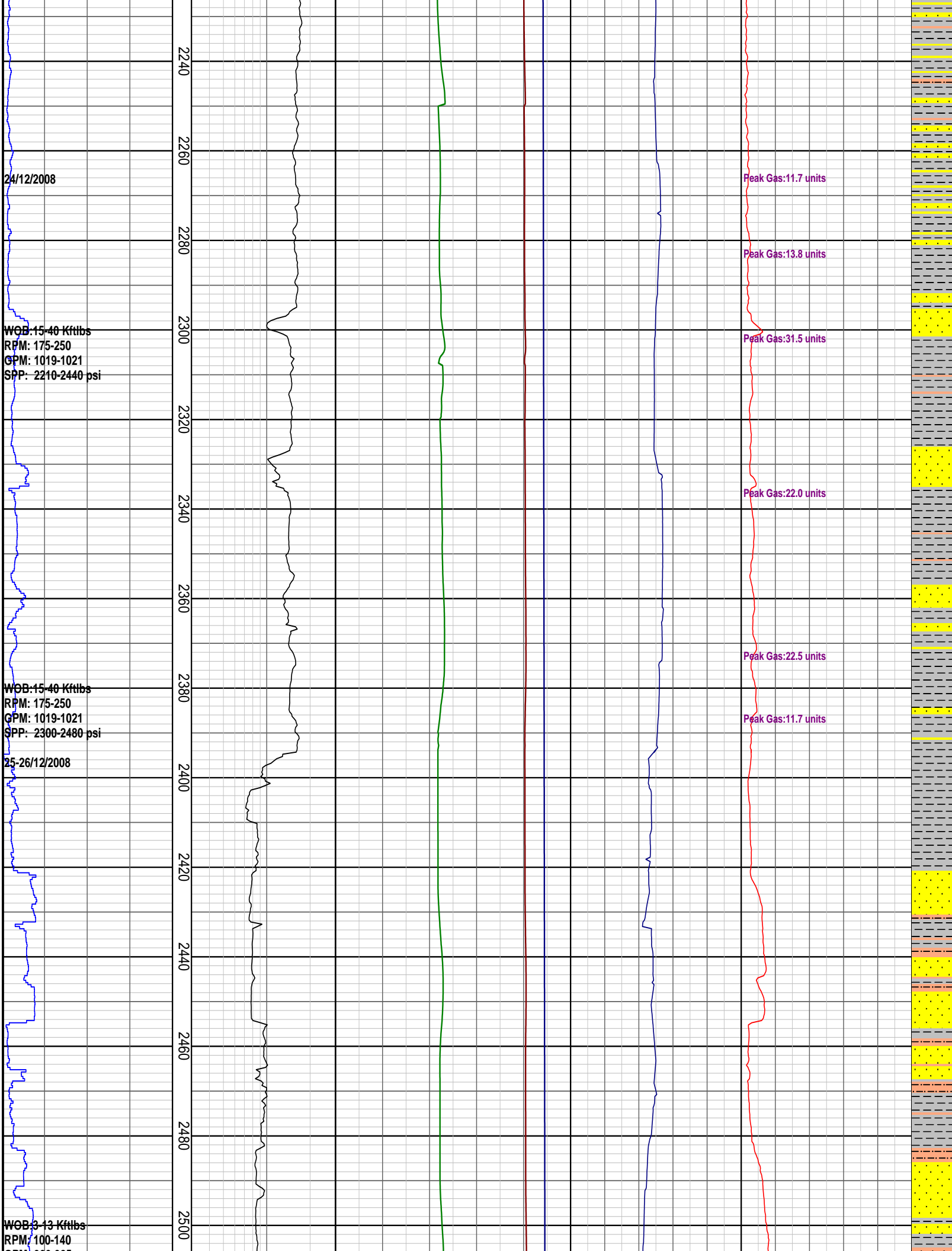
23/12/2008

WOB: 3-41 Kftlbs  
RPM: 121-247  
GPM: 896-1028  
SPP: 2202-2364psi

Carbide Run @ 1982.0 m  
Actual: 6500 strks  
Theoretical: 6445 strks  
Avg Hole Diameter : 12.35"  
Carbide Gas : 30 units

Peak Gas:10.2 units





24/12/2008

WOB: 15-40 Kftlbs  
RPM: 175-250  
GPM: 1019-1021  
SPP: 2210-2440 psi

WOB: 15-40 Kftlbs  
RPM: 175-250  
GPM: 1019-1021  
SPP: 2300-2480 psi

25-26/12/2008

WOB: 3-13 Kftlbs  
RPM: 100-140

Peak Gas: 11.7 units

Peak Gas: 13.8 units

Peak Gas: 31.5 units

Peak Gas: 22.0 units

Peak Gas: 22.5 units

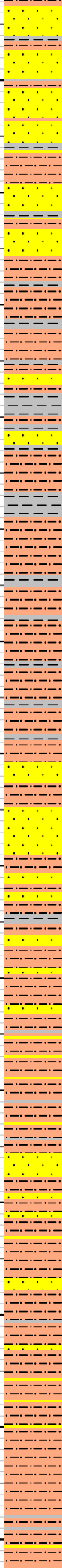
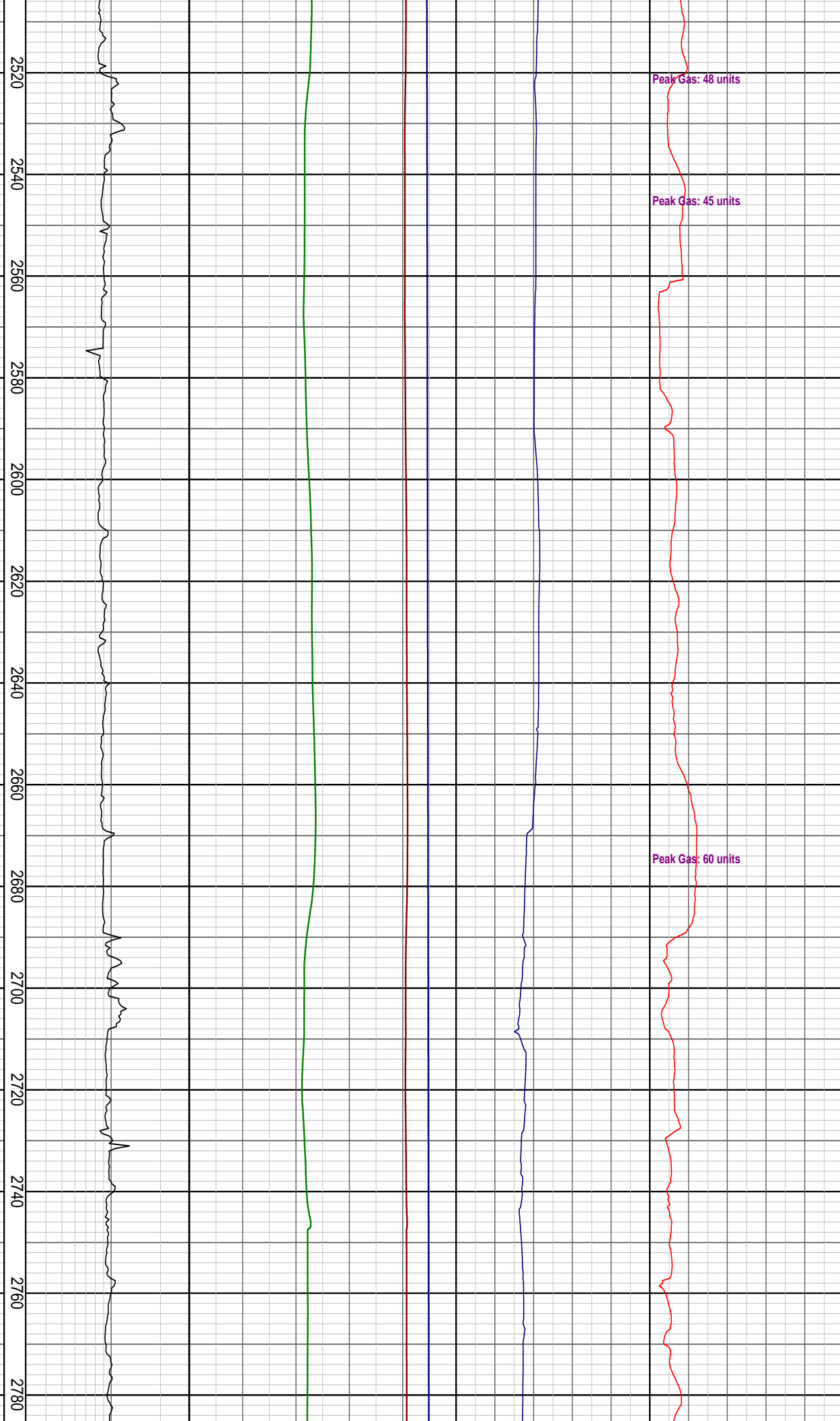
Peak Gas: 11.7 units

GPM: 900-925  
SPP: 2045-2615 psi

WOB: 10-15 Kftlbs  
RPM: 100-180  
GPM: 900-905  
SPP: 2105-2425 psi

27/12/2008

WOB: 10-20 Kftlbs  
RPM: 100-180  
GPM: 895-900  
SPP: 2150-2385 psi

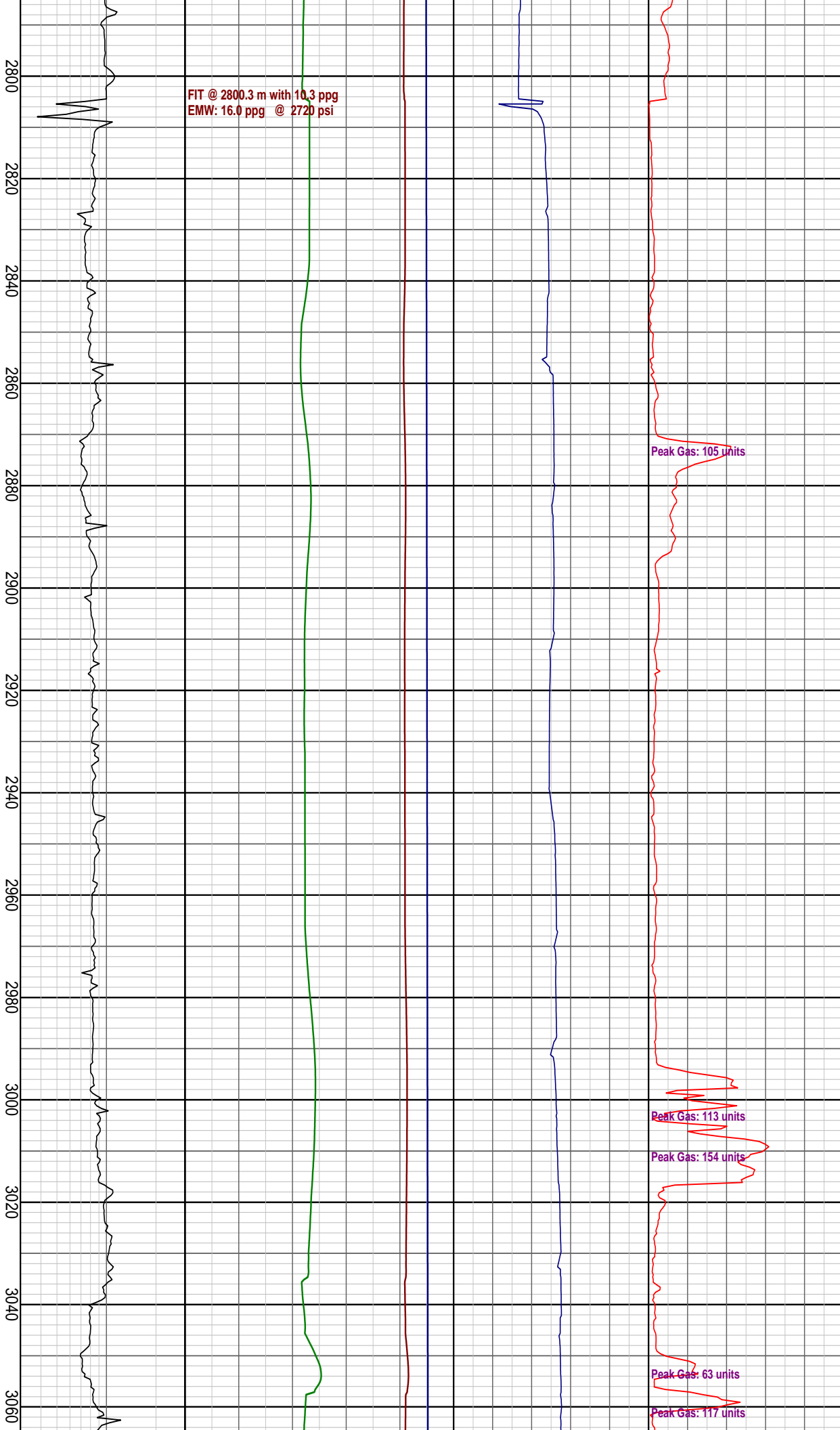


Set 9 5/8" Casing at 2800.3 m  
WOB: 14.23 Kftlbs  
RPM: 0-81  
GPM: 897-902  
SPP: 2028-2550 psi

FIT @ 2800.3 m with 10.3 ppg  
EMW: 16.0 ppg @ 2720 psi

WOB: 1.14 Kftlbs  
RPM: 15-139  
GPM: 189-901  
SPP: 700-2725 psi

WOB: 10.20 Kftlbs  
RPM: 70-78  
GPM: 705-720  
SPP: 2675-2780 psi  
04/01/2009



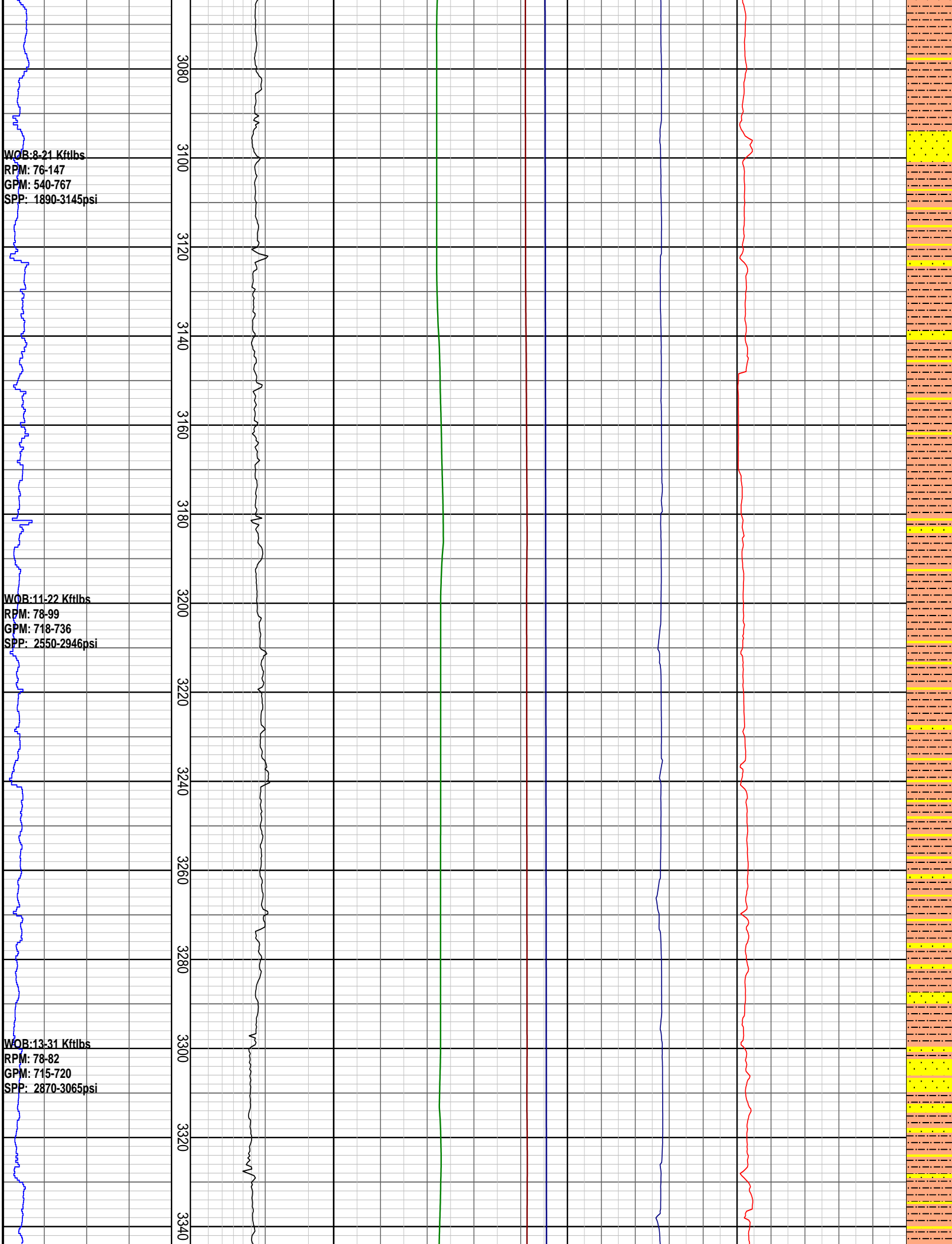
Peak Gas: 105 units

Peak Gas: 113 units

Peak Gas: 154 units

Peak Gas: 63 units

Peak Gas: 117 units





**PRESSURE DATA PLOT**

Rate of Penetration ROP	DRILLING EXPONENT DXC	PRESSURE DATA Pore Pressure	TEMPERATURE Temperature Out	GAS Total Gas	INTERPRETED LITHOLOGY
50   100   150   200 m/hr	0.3   3	4   8   12   16   20 ppg	20   40   60   80   100 degC	50   100   150   200   250 unit	
		4   8   12   16   20 ppg			

**Overburden Gradient**

4 | 8 | 12 | 16 | 20  
ppg